



January 2026



What's on Mondays



peer support

Carersfirst Support Group

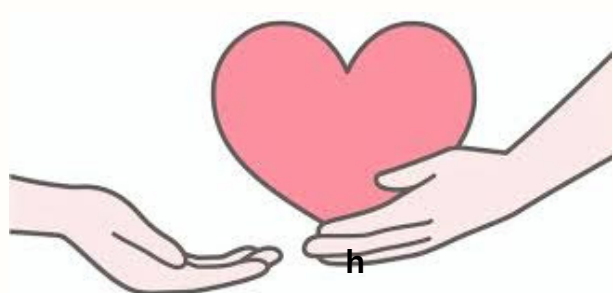
Take time out from your
caring role

Come along to our group for
emotional, practical and
peer support

Meeting on Monday
5th & 19th January 2026

The John Marstons
Blurton
ST3 2NQ

11.00 am - 1.00 pm



What's on Tuesday

Carers Catch up & Activities

Biddulph

Community Zone
ST8 6NE

6th January 2026
10am - 11:30am

Carers Support Group

Kidsgrove

Kidsgrove Library
ST7 1BS

20th January 2026
2.00 pm - 3.30 pm

Carers Catch Up **Hempstalls Lane** **Newcastle**

27th January 2026
10.30 am - 12.00pm
Hempstalls Care Home
ST5 9NR

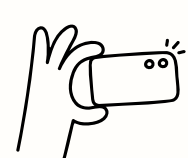
What's on Wednesdays



What's on Thursdays

Photography Club

Fenton



(Every Wednesday)

10am-12 Noon



Temple St Community Centre
ST4 4NW

Brunch @ Olive Tree Cafe

Silverdale

10:30am - 12 Noon

Garners Garden Centre
ST5 6SH

8th January 2026



Lifeworks Meeting



14th January 2026

10:30am to 12pm

(For Carers with Autism or Caring
for someone with Autism)

Harper House, Harper Street,
Middleport, ST6 3QU

PEGIS

SEND

Community Lounge

Fenton

10am- 12 Noon

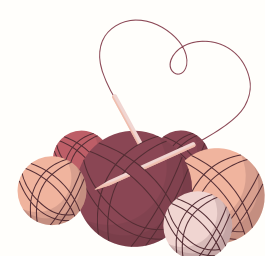
Hazel Trees ST4 3NR

15th January 2026

Arts & Crafts

Fenton

ST4 4NW



Temple Street Community Centre
Fenton

10am-12 Noon

**Meeting on
14th & 28th January 2026**

CARERS DROP IN

Trent House

Fenton

10.00 am - 11.30 am

15th January 2026

Come and have a chat with
one of our Support Advisors

What's On Fridays January 2026



Carers Support Group

Meir

10am-12pm

Meir Primary Care Centre
ST3 6AB

Meeting on 9th January 2026



Men Care 2

Join our monthly
Men's group

Meet new friends & share
experiences

Meeting at
The Cafe Fenton, Albert Sq
Fenton, ST4 3FA

16th January 2026
10.30 am - 12.30 pm

SHARED MEMORIES DEMENTIA GROUP

Join our NEW monthly group
for those living with Dementia
and their Carers

Meet new friends & share
experiences

Meeting at
Werrington Library, ST9 0JS

30th January 2026
10.00 am - 12.00 noon



Out and About at the Community Lounges



**3RD WEDNESDAY
OF EVERY MONTH**

**St Johns Welcome Centre
ABBEY HULTON
ST2 8JW**

9.00 am - 10.30 am



**2ND TUESDAY
OF EVERY MONTH**

**The Hub @ ST6
Fegg Hayes
ST6 6QR**

10.00 am - 12 noon

**3RD THURSDAY
OF EVERY MONTH**

**Temple Street Community Centre
FENTON
ST4 4NW**

10.00 am - 12 noon

Come and speak to one of our Carer
Advisors at any of the above venues
to find out what support is available

